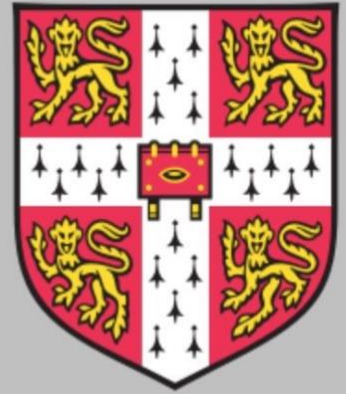


# Norfolk Cambridge Society

## Summer 2021 Newsletter



### From the Chair

Dear Fellow Alumni,

At last the summer is here, allowing us a splendid programme of both indoor and outdoor events, many organised by Mu Gurbutt, of which more below. They include a visit to the National Horseracing Museum at Newmarket, and two interesting walks. There are also still two seats left at the first outing of our new Epicureans dining group, meeting for lunch at The Dial House, Reepham on Sunday 22<sup>nd</sup> August. Our in-person lecture series at The Blake Studio, Norwich School is also due to resume on Thursday 23<sup>rd</sup> September, with a talk by Dr Nikhil Krishnan of Robinson College on *The Pursuit of Truth – a necessity or a Fool's Errand?* And of course, our discussion groups continue unabated: our Book Group led by Kathy Moyse, our Sceptics current affairs group led by Tim Cawkwell, and our Socratic philosophy group and more whimsical Symposiasts discussion group, both led by me. We also have two places left for our new Incrementum Investment Club, meeting six-weekly at the Norfolk Club over lunch, jointly with Norfolk Club members. What more could you wish for to tickle your intellectual and cultural fancies? If you can think of anything, please let me know!

Many congratulations to Annie Grant and her team for organising this year's NCS Student Awards. Our entry was significantly up on last year and produced three very worthy winners. More details later in the newsletter.

One sad thing. Due to heavy work commitments, Lucy Fuller has resigned from the NCS Committee. She has been of huge help in getting our website running smoothly and I am very grateful to her. We are nevertheless now looking for someone to take over the running of said website. Lucy says it takes hardly any technical skills and requires only an hour or two a month. She is also very prepared to give a new person guidance by Zoom on how to do it. *Anyone agreeing to take it over will be offered a seat on our committee and an opportunity to help shape the future of our society.* We meet quarterly. Please do contact me if you are interested: [geoffreyjnsmart@gmail.com](mailto:geoffreyjnsmart@gmail.com)

At the time of writing, Covid continues to blight our collective return to normality. Hopefully, however, all or most of us have received our jobs and are now protected to a high degree. I look forward to being able to see you in person at some of our upcoming events including, I hope, our AGM on Wednesday 15<sup>th</sup> September. See below for details.

Best wishes  
Geoffrey

### From the Editor

As you can see we are establishing a core of regular activities alongside some 'one offs' and are cautiously beginning to get back to more in-person rather than online. The last 18 months have certainly been a challenge for all of us; in the same storm but not necessarily in the same boat.

I hope the more regular publication of the Newsletter has been of interest and enabled you to feel you are more in touch with Cambridge alumni in the county while our lives have been so circumscribed in most other ways. As ever, if you would like to contribute in any way please contact me at [ajskcm@btinternet.com](mailto:ajskcm@btinternet.com)

Despite the weather (pay back for last year?) may I wish you all a safe and sociable summer.

Kathy Moyse

## Norfolk Cambridge Society Lectures

Our Ninth Lecture was delivered by webinar on April 13th by Dr Corinna Russell, Fellow of Emmanuel College, Cambridge, a member of the University's Faculty of English and a self-described "Bloater" from Great Yarmouth. Her topic was ***Why Poetry Matters***. She explored the profound contribution that poetry has made to the world, drawing on the works of Keats, Wheatley and others. An estimated 200 people watched and the subsequent feedback was excellent. We are extremely grateful to Dr Russell for maintaining the very high quality of the Norfolk Cambridge Society lectures.

If all goes to plan, our Tenth Lecture (**on Thursday 23<sup>rd</sup> September at 6.30pm**) will be the first since January 2020 to take place in The Blake Studio at Norwich School. It will ask ***The Pursuit of Truth; a Necessity or a Fool's Errand?*** and will be delivered by Dr Nikhil Krishnan, Fellow of Robinson College, University of Cambridge and Director of Studies in Philosophy. He is also a former Rhodes scholar. The subject of the nature of truth, of course, is very relevant to a lecture series dedicated to the rigorous pursuit and dissemination of truth by leading academics! Formal invitations to all alumni on our lectures database will be sent out by email this month.

*If you have yet to attend one of our lectures and wish to ensure you receive an invitation, please email [geoffreyjnsmart@gmail.com](mailto:geoffreyjnsmart@gmail.com), registering your interest.*

## Norfolk Cambridge Society Student Award Scheme 2021

In the Spring 2021 NCS newsletter, we reported on the progress of our second Student Award Scheme Essay Competition. Thanks to our contacts in Norfolk schools, we received significantly more entries than in the previous pilot year, and from a wider range of both state and private schools. Those eligible to enter had all been offered a place to study at the University of Cambridge.

We were impressed by the overall quality of the essays submitted and the range of topics chosen in response to the task we set: to respond in no more than 1,000 words to the question 'What, in your view, is the most important challenge facing the UK in the 21<sup>st</sup> Century?'. The Awards Sub-Committee shortlisted 6 candidates, and Zoom interviews were held in late April. I am delighted to announce that the three winners of a £500 cash prize each are:

- Jamie Dawes (Norwich School) who wrote about the impact of income inequality and other social divisions within society
- Amelia Platt (Reepham College) who highlighted the lack of a critical engagement with much of the information we receive, especially through social media
- Oliver Righton (East Norfolk Sixth Form College) who addressed the ongoing risk of biological threats typified by the SARS-CoV-2 pandemic.

We are planning to formally celebrate the success of the prize-winners at the next NCS lecture on September 23<sup>rd</sup> - details of which are given above.

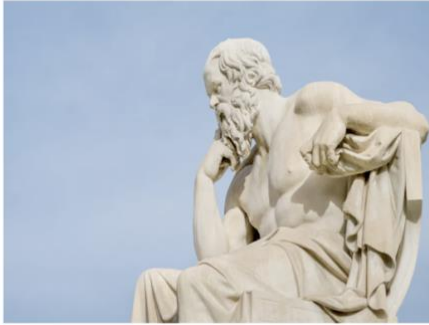
I should like to thank all those students who took the trouble to submit an essay. They were all interesting to read and demonstrated a talent and commitment that have encouraged us to continue to run the scheme as an annual event.

Annie Grant  
Chair, NCS Student Award Scheme Sub-Committee.

## NCS Discussion Groups

### NCS Socratics

*Stimulating discussions on things that matter - over a glass of wine*



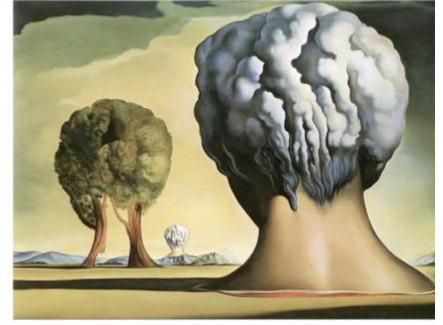
### NCS Sceptics

*Stimulating discussions on things current - over a glass of wine*



### NCS Symposiasts

*Stimulating discussions on things whimsical - over a glass of wine*



Our discussion groups have continued on Zoom over the spring and have been extremely lively. They are now held monthly, rotating between Socratics, Sceptics and Symposiasts. Those attending not only say how much they enjoy the meetings but also praise the opportunity it gives them to spend an hour or two each month doing the background reading and clarifying their thoughts on each issue.

Topics discussed since the last newsletter have been:

1. Should the UK have a written constitution?
2. What exactly do we mean by Free Will and, whether or not it exists, are we better off believing it does?
3. Where might this country be in 30 years' time?
4. What should we do to preserve peace in Northern Ireland?
5. Which are the most important countries we should now seek to strengthen relationships with?

Our next is a meeting of Symposiasts on **Thursday 22<sup>nd</sup> July at 6.00pm** probably again by Zoom (but possibly in-person) when we will be addressing "**My favourite poems**". If you would like to take part, please email [geoffreyjnsmart@gmail.com](mailto:geoffreyjnsmart@gmail.com)

Details of all future meetings can be found at <https://www.alumni.cam.ac.uk/group/norfolk-cambridge-society>

## Book Group

Since the last newsletter we have discussed *Mountains of the Mind* by Robert MacFarlane which was universally enjoyed and, most recently, *Pure* by Andrew Miller: A very different prospect! The novel, set in pre-revolutionary Paris, recreates the dismantling of the cemetery at Les Halles by an unsophisticated mining engineer from northern France on the orders of the King. A blend of the gothic and magic realism it was not to everyone's taste but provoked another excellent discussion.

After a summer break we will resume on **Wednesday September 29<sup>th</sup> at 6pm** when we'll be considering *Pride and Prejudice* by Jane Austen and Jo Baker's *Longbourn*, a 'below stairs' take on the events of Austen's novel.

We have decided to stay online for the moment as our current membership is very geographically dispersed.

If you would like to join us please email me at [ajskcm@btinternet.com](mailto:ajskcm@btinternet.com)

Kathy Moyse

## NCS Epicureans

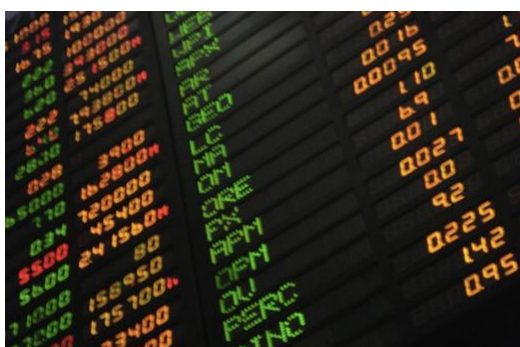


The first meeting of NCS Epicureans will be for lunch on Sunday 22<sup>nd</sup> August at The Dial House, Reepham. This is a new dining group for members, their partners and their friends, meeting six-weekly (if there is enough interest) at restaurants and gastropubs, generally within a ten-mile radius of Norwich. The plan is to alternate between Sunday lunches and midweek evening meals. The cost of the meal is paid in advance, but drinks are paid for separately on the day, according to consumption. This should be a great opportunity to meet other members of the Society in convivial surroundings and to make new friends and acquaintances.

The Dial House is an excellent place for Sunday lunch: The charge for a two-course set menu is just £20 per head and for three courses, £25. Sample menus are available to view at [www.thedialhouse.org.uk](http://www.thedialhouse.org.uk). The number of people at this lunch is limited to twelve on a first come, first served basis. Ten people have so far signed up, so there's room for two more. You may also wish to get your name down as one of the twelve for the first Epicureans dinner, which will take place on Wednesday 6 October from 7.30pm at a restaurant in Norwich, yet to be chosen.

Please email [geoffreyjnsmart@gmail.com](mailto:geoffreyjnsmart@gmail.com) if you are interested in one or the other. Or both!

## Incrementum Lunch Club



We have space for two more members of our new investment lunch club, Incrementum, open to both Norfolk Cambridge Society and Norfolk Club members. It will require no capital contributions and be run just for fun, with a notional portfolio focussed on growth (mainly AIM listed companies and overseas equivalents). There will be a maximum of twelve members, ideally six from the NCS and six from the Norfolk Club, meeting once every six weeks late morning for around an hour. The meetings will continue light-heartedly over lunch. Each person will be expected to bring along one recommendation per meeting, either for investment or for disinvestment and our notional portfolio will be adjusted at each meeting, based on majority voting. There will be an annual prize for the best recommendations, judged by gains made or losses avoided or both. Humour will be the most important ingredient, although of course members might find it a useful source of ideas for their own private portfolios!

If you are interested, please email [geoffreyjnsmart@gmail.com](mailto:geoffreyjnsmart@gmail.com)

## **Visit to the National Horse Racing Museum: Newmarket (CB8 8EP)**

**Tuesday 3<sup>rd</sup> August**

**Meeting at the venue at 10am**

**£15 with a 50% reduction for Art Fund members**

The Palace House Estate is a 5-acre site in the heart of Newmarket. The Museum is located in the Trainer's House and King's Yard Galleries and tells the history and wider story of horseracing. It considers the breeding of the thoroughbred and features silverware and silks worn by famous jockeys. The Palace House, which was part of accommodation used by Charles II, houses an art gallery with works by Stubbs, Munnings, Singer Sargent and many others. Finally, in the Rothschild Yard, former racehorses are retrained and there will be the opportunity for a special look behind the scenes to see the horses. A strict one-way system has been introduced during the last year.

If interested and for further information, please contact Mu Gurbutt at [mugurbutt@hotmail.com](mailto:mugurbutt@hotmail.com)

## **Flint Vineyard Visit and Blyth Estuary Walk**

We have now had two visits and the weather was brilliant for both of them!

First the visit to Flint Vineyard, near Harleston, where Hannah Witchell showed us the vines and explained the annual procedure in producing the grapes. With the recent cold spell, leaf growth has been slow and the back-breaking job of "bud-rubbing" was underway. Ben, Hannah's husband, then described the technical side of wine production before we sampled some of the finished products, including this year's Pinot Noir, which hadn't even been labelled. Lunch, all sourced within a 15-mile radius, was enjoyed as we looked out across the Waveney Valley.

Our walk from Old Hall Farm along the Blyth Estuary was also completed in glorious sunshine. The swallows were back, swooping above the reeds catching insects and there were clear views across the marshes to Walberswick and Blythburgh churches. With these big open skies, no wonder the area attracted so many artists. We were able to sit outside for lunch, enjoying the warmth of the sunshine. A short drive across the A12 and, nestling in the woods, is the outdoor theatre at Thorington. What a location! We were transported to the tropical island of Shakespeare's *The Tempest*. A most enjoyable afternoon. There is a full programme of plays during the summer months and I can recommend a visit. Just a couple of points: bring or hire a cushion and choose your seat carefully as it can get very warm facing the sun.

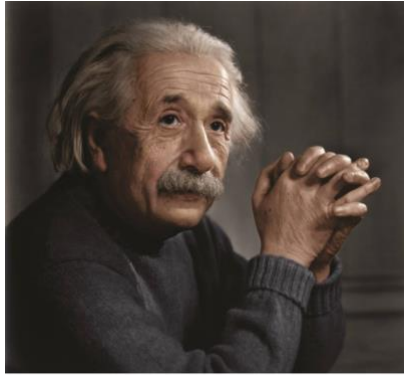
Mu Gurbutt  
i/c cultural events

## **Annual General Meeting**

This year's AGM will be held on **Wednesday 15<sup>th</sup> September from 7.00pm**. As yet a location has not been selected and it is still possible it will be held by Zoom if Covid restrictions are not by then a thing of the past.

Please register your interest in attending by emailing [pdgsmith@hotmail.com](mailto:pdgsmith@hotmail.com) as soon as possible, stating whether in principle you would be prepared to attend a physical meeting in Norwich if Covid restrictions permit.

## Brain of Norfolk



Sadly, no-one submitted any answers to our Spring Brain of Norfolk quiz. There are only two plausible explanations. Either the questions were too difficult or there is a profound lack of interest amongst NCS members in doing quizzes. I strongly suspect the latter. So, what to do? Should I quietly discontinue them, or try one more time with you, or possibly try spreading our quiz questions more widely, inviting non-alumni across Norfolk to have a go at beating our members? I think I will try with you all one more time. So here goes.

Last time I left you with two unsolved old questions from our Winter Newsletter and three new ones, all with answers connected to Norfolk, Cambridge or both. Rather than go to the trouble of creating new questions that cannot easily be looked up on the net (no easy task) I shall give you the answers now to the two remaining unsolved questions from the winter. (It may give you a clue as to how my warped mind works and a better chance of solving the three new questions introduced in our Spring newsletter.)

The two old questions were:

1. This (or here) repeated thrice, revealed what object reminiscent of Murdoch? (Additional clue given in Spring newsletter. Latin scholars may have an advantage, as may students of literature.)
2. Which notable Chancellor, strongly in favour of fellows spreading their knowledge far and wide, had very close connections with two fine buildings exactly 53.63 miles apart, as the crow flies? And which are those buildings? *Additional clue given in Spring newsletter. The manner of death of one of the owners of one of the buildings has connections with Question 1.*

### **Answer to Question 1**

**The Head of Edmund the Martyr** (also known as St Edmund or Edmund of East Anglia). Edmund died on 20<sup>th</sup> November 869 and was king of East Anglia from about 855 until his death.

According to Wikipedia, little is known about Edmund. He is thought to have been of East Anglian origin and was first mentioned in the Anglo-Saxon Chronicle, written some years after his death. The kingdom of East Anglia was devastated by the Vikings, who destroyed any contemporary evidence of his reign. Later writers produced fictitious accounts of his life, asserting that he was born in 841, the son of Æthelweard, an obscure East Anglian king, whom it was said Edmund succeeded when he was 14 (or alternatively that he was the youngest son of a Germanic king named Alcmund).

Later versions of Edmund's life relate that he was crowned on 25 December 855 at Burna (probably Bures St Mary in Suffolk) which at that time functioned as the royal capital, and that he became a model king.

In 869, the Great Heathen Army advanced on East Anglia and killed Edmund. According to Asser and the Anglo-Saxon Chronicle, he died in battle, but by later tradition he met his death at an unidentified place known as Haegelisdun, after he refused the Danes' demand to renounce Christ. They beat him, shot him with arrows and then beheaded him, on the orders of Ivar the Boneless and his brother Ubba.

According to one legend, his head was then thrown into the forest, but was found safe by searchers after following the cries of an ethereal wolf that was calling out in Latin, "Hic, Hic, Hic" – "Here, Here, Here".

The connection with Murdoch? "A Severed Head" by Iris Murdoch.

### **Answer to Question 2**

**Sir Walter Mildmay (1523 – 1589)**, Chancellor of the Exchequer to Queen Elizabeth I and founder of Emmanuel College, (my old college). Mildmay deprecated perpetual fellowships, and warned the fellows against regarding the college as "a perpetual abode" - they were to "look forward to spreading outside the knowledge they acquired within its walls". (*This of course is very much the idea behind the Norfolk Cambridge Society lectures!*) After the Duke of Somerset's arrest, Mildmay was ordered by the Privy Council of 12<sup>th</sup> November 1549, to examine the royal palace at Westminster, which had been in the Duke's custody, and on 8<sup>th</sup> March 1550 to take charge of the Duke's property at Syon House. Syon House is exactly 53.63 miles from Emmanuel College as the crow flies. You can check this using <https://www.movable-type.co.uk/scripts/latlong.html> if you enter the exact latitude and longitude of the two locations.

I'm sure you're glad that's out of the way. So on to the three remaining unsolved questions from the Spring Newsletter.

1. What is the connection between Fiji, Florence and the city of Sheffield?
2. He had a son of the same name as himself who was educated at Trinity. Arguably he was forever in debt to a man who proclaimed, immediately before he died, that he had deserved a thousand deaths.
3. A virologist who probably trousers very little?

Possibly your last chance to keep Brain of Norfolk alive, at least in the exclusive confines of our newsletters. Please email your answers to [geoffreyjnsmart@gmail.com](mailto:geoffreyjnsmart@gmail.com)

Good luck.  
Geoffrey

### **Hot off the Press!**

The Industrial Norwich walk has proved to be very popular and Mary Fewster has kindly agreed to lead a second walk during the afternoon of **16<sup>th</sup> July, starting at 2pm** and lasting about an hour and a half. There are a few remaining places for this which can be booked by e-mail [mugurbutt@hotmail.com](mailto:mugurbutt@hotmail.com)

Finally, there may be an extra trip in September, though the date is to be confirmed. The David Parr house in Cambridge is a terrace house in Gwydir Street, but the sometime owner, having worked during the day decorating the colleges and churches, painted his own home in his spare time. This is an amazing example, largely untouched, of the work of this craftsman. The rooms are small and the number of visitors has to be limited. The plan is to have two groups of 6, each group having a talk and then a walk round the house, followed by lunch at the University Centre. If you are interested and would like further details, please contact me at [mugurbutt@hotmail.com](mailto:mugurbutt@hotmail.com)

### **Contacts**

Geoffrey Smart [geoffreyjnsmart@gmail.com](mailto:geoffreyjnsmart@gmail.com)  
Kathy Moyse [ajskcm@btinternet.com](mailto:ajskcm@btinternet.com)  
Mu Gurbutt [mugurbutt@hotmail.com](mailto:mugurbutt@hotmail.com)  
Peter Smith [pdgsmith@hotmail.com](mailto:pdgsmith@hotmail.com)

<https://www.alumni.cam.ac.uk/group/norfolk-cambridge-society>

## Calendar of Events: July-September 2021

<b>Date</b>	<b>Day</b>	<b>Time</b>	<b>Event</b>	<b>Nature of event</b>	<b>Contact</b>
16/07/21	Thursday	2pm	Industrial Norwich	Guided walk	Mu Gurbutt
22/07/21	Thursday	6.00pm to 7.30pm	Symposiasts	Whimsical discussion by Zoom - my favourite poems	Geoffrey Smart
03/08/21	Tuesday	10.00am	National Horseracing Museum, Newmarket	Visit	Mu Gurbutt
12/08/21	Thursday	12.00pm	Incrementum Investment Club	Light-hearted lunch meeting at the Norfolk Club, jointly with some club members	Geoffrey Smart
22/08/21	Sunday	1.00pm	Epicureans lunch	Lunch at The Dial House, Reepham	Geoffrey Smart
26/08/21	Thursday	6.00pm	Socratics	Philosophical discussion group	Geoffrey Smart
15/09/21	Wednesday	7.00pm	AGM	Annual General Meeting	Peter Smith
22/09/21	Wednesday	12.00pm	Incrementum Investment Club	Light-hearted lunch meeting at the Norfolk Club, jointly with some club members	Geoffrey Smart
23/09/21	Thursday	6.30pm	Tenth Norfolk Cambridge Society Lecture - The Pursuit of Truth; a Necessity or a Fool's Errand?	Philosophy lecture by Dr Nikhil Krishnan in The Blake Studio, Norwich School	Geoffrey Smart
29/09/21	Wednesday	6.00pm.	Book Group	Zoom meeting <i>Pride and Prejudice Longbourn</i> (Jo Baker)	Kathy Moyse